

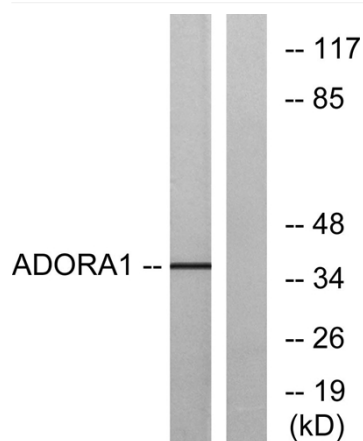


Adenosine A1-R Polyclonal Antibody

Catalog No	YP-Ab-13136
Isotype	IgG
Reactivity	Human;Rat
Applications	WB;IF;ELISA
Gene Name	ADORA1
Protein Name	Adenosine receptor A1
Immunogen	The antiserum was produced against synthesized peptide derived from human ADORA1. AA range:277-326
Specificity	Adenosine A1-R Polyclonal Antibody detects endogenous levels of Adenosine A1-R protein.
Formulation	Liquid in PBS containing 50% glycerol, 0.5% BSA and 0.02% sodium azide.
Source	Polyclonal, Rabbit,IgG
Purification	The antibody was affinity-purified from rabbit antiserum by affinity-chromatography using epitope-specific immunogen.
Dilution	Western Blot: 1/500 - 1/2000. Immunofluorescence: 1/200 - 1/1000. ELISA: 1/20000. Not yet tested in other applications.
Concentration	1 mg/ml
Purity	≥90%
Storage Stability	-20°C/1 year
Synonyms	ADORA1; Adenosine receptor A1
Observed Band	37kD
Cell Pathway	Cell membrane ; Multi-pass membrane protein.
Tissue Specificity	Brain,Heart,Hippocampus,
Function	function:Receptor for adenosine. The activity of this receptor is mediated by G proteins which inhibit adenylyl cyclase.,similarity:Belongs to the G-protein coupled receptor 1 family.,
Background	The protein encoded by this gene is an adenosine receptor that belongs to the G-protein coupled receptor 1 family. There are 3 types of adenosine receptors, each with a specific pattern of ligand binding and tissue distribution, and together they regulate a diverse set of physiologic functions. The type A1 receptors inhibit adenylyl cyclase, and play a role in the fertilization process. Animal studies also suggest a role for A1 receptors in kidney function and ethanol intoxication. Transcript variants with alternative splicing in the 5' UTR have been found for this gene. [provided by RefSeq, Jul 2008],
matters needing attention	Avoid repeated freezing and thawing!

**Usage suggestions**

This product can be used in immunological reaction related experiments. For more information, please consult technical personnel.

Products Images

Western blot analysis of lysates from MCF-7 cells, using ADORA1 Antibody. The lane on the right is blocked with the synthesized peptide.